



KKCF Competitive Business Challenge Winners' Showcase



IMPLEMENTED JOINTLY BY



IN PARTNERSHIP WITH



SUPPORTED BY



About KKCF

The Kakuma Kalobeyei Challenge Fund (KKCF) is a program of the IFC, implemented with AECF, Turkana County Government, and United Nations High Commissioner for Refugees (UNHCR). The five-year program is designed to support private sector investment and unlock the economic potential of refugees and their hosts in Kenya's Turkana County.

About the Competitive Business Challenge

The competitive business challenge offers incentives to small and medium-sized businesses looking to enter the Kakuma and Kalobeyei area, and use innovative enterprise models to improve essential services and products for people living there.

The competition supports established companies, social enterprises, and local entrepreneurs in implementing commercially viable and sustainable businesses that have the potential to raise incomes, provide goods and services, create jobs and/or improve living standards in both the camp and host community.



01

Private Sector Window (PSW)



SUNKEN LIMITED



Energy - clean cooking

Sunken Ltd. is a producer of energy-saving cooking stoves, specifically targeting low-income earners. The company through funding from KKCF is scaling up the production and distribution of cookstoves, within the Kakuma and Kalobeyi area. This will create jobs for the local community specifically for women and the youth, while reducing indoor smoke, and resultant respiratory illness at household level.



Expected Impact



15,000
households
reached



75,000
people
impacted



100 SMEs
supported

ZIWANI POULTRY ENTERPRISE LIMITED



Agribusiness – poultry farming

Ziwani Poultry Enterprise Ltd. is an agribusiness that supports small holder farmers to produce improved chicken and duck breeds. The agribusiness, through the support of KKCF, is improving the chicken value chain in the Kakuma-Kalobeyi area by linking farmers to markets, and providing equipment and services like hatcheries and an abattoir. The company will create jobs and improve the capacity of smallholder farmers.



Expected Impact



2,024
households
reached



10,120
people
impacted



58 direct
jobs created

RENEWVIA ENERGY KENYA LIMITED



Energy – solar mini grids

Renewvia Energy Kenya Ltd. is an energy company that designs and constructs solar mini grids, supplying underserved communities with reliable and affordable electricity. The company has a presence in Kakuma where they have supplied electricity to households, businesses, and public and private institutions such as NGOs, schools, clinics, and churches. The company, through KKCF funding, is expanding their capacity while increasing connections in the Kalobeyei settlement area.



Expected Impact



2,600
households
connected



225 SMEs
connected



483 tonnes
of carbon
dioxide
emission
reduced



Financial services – green loans

Rafode Limited is a micro-finance company that provides financial services and renewable energy products to low-income rural communities. The company also provides credit to micro and small businesses. Through KKCF funding, Rafode Limited is expanding its activities to refugees in Kakuma Camp and Kalobeyei Settlement scheme, improving access to affordable financial services and quality renewable energy products.



Expected Impact



3,000
households
reached



50 jobs
created
through
support to
SMEs



24 direct
jobs created

THE HIVE LIMITED



Agribusiness – beekeeping/apiculture

The Hive Limited is a leading specialist in modern beekeeping equipment and beekeeping services in Kenya. The company works closely with beekeepers, focusing on increasing production and quality of bee products such as honey and beeswax. The company, through KKCF funding, will tap into the huge beekeeping potential in Kakuma and Kalobeyei through a commercial beekeeping hub that will provide economic and nutritional benefits among refugees and host communities.



Expected Impact



100 new
beekeeping
trainers



1600
farmers
reached



22 direct
jobs created

GREEN INNOVATION VENTURES ENTERPRISES LIMITED (GIVE LTD)



Energy – solar rooftop systems

GIVE LTD is an energy and technology company that builds and installs stand-alone solar rooftop systems to provide electricity to enterprises and households. The company, through KKCF funding, is bringing its solar rooftop component systems to the Kakuma and Kalobeyei refugee settlement and surrounding host community, which will accelerate the uptake of reliable electricity.



Expected Impact



1500 people
directly
benefit each
month



200 SMEs
electrified



60 direct
jobs created

02

Social Enterprise Window (SEW)



WASTE ELECTRICAL AND ELECTRONIC EQUIPMENT CENTRE (WEEE CENTRE)



E-Waste Management

Waste Electrical and Electronic Equipment Center (WEEE Centre) is involved in e-waste recycling by safely collecting and dismantling old electronics to recover raw materials for recycling into new electronic products. This social enterprise, through funding from KKCF, is setting up a training center that will equip the youth—especially young women—in Kakuma and Kalobeyei with skills in digital literacy, ICT repair and maintenance of electronics, computers and solar equipment.



Expected Impact



2 training
centres
established



2,080 youth
trained



104 direct
jobs created

KIDOGO INNOVATION



Education - childcare

Kidogo Innovation uses a social franchise model to partner with entrepreneurial women to help them start or improve their own early childhood education micro-businesses. Through funding from KKCF, Kidogo Innovation is adapting its unique model to the Kakuma-Kalobeyei area, providing skills to women to run their own childcare micro-businesses and guaranteeing safe and quality childcare in the area.



Expected Impact



2500
children
reached



70
franchisees
supported



100 micro
businesses
established

HYDROPONICS AFRICA LIMITED



Agribusiness- hydroponics

Hydroponics Africa Ltd. installs simplified, cost-effective hydroponic farming solutions that deliver value through less water usage, reduced labor and land requirements, and increased crop yield. Through funding from KKCF, the company is setting up a centralized hydroponic farm which will be used for production, training, and value addition.



Expected Impact



720,000
kgs of
fresh farm
produce
annually



188,000
livestock
fodder
produced
annually



1,000
people
trained.

K DE IGRATIUM INTERNATIONAL LIMITED (KDII LTD)



Health – hygiene products

K De Igratium International Ltd. (KDII Ltd) addresses menstrual health challenges by supplying reusable sanitary towels that reduce the cost in low-income areas. Through funding from KKCF, KDII Ltd. is setting up a production facility and a distribution center in the Kakuma-Kalobeyei area and creating direct employment to the host community and refugees.



Expected Impact



5 stockists
supported



8000
households
reached



3.6 million
disposable
sanitary towels
saved from the
environment

WESSEX SOCIAL VENTURES (WSV)



Health - eyecare

Wessex Social Ventures (WSV) creates and scales community-owned businesses in a number of sectors, including health, agriculture and renewable energy. WSV also produces DOT Glasses which are low-cost adjustable eyeglasses that are provided through a network of local retailers. Through KKCF funding, WSV is building a sustainable, self-financing network of micro-entrepreneurs to test vision and dispense glasses in the Kakuma-Kalobeyei area. This will create jobs, while also providing opportunities for improved vision in both the refugee and host communities.



Expected Impact



51,000 people
directly impacted



18 direct
jobs created



Financial Services - Grants and Loans

AEC Kenya is a social enterprise that provides investment products and consulting/training services in underserved areas, including Kakuma-Kalobeyei. Through funding from KKCF, the company will equip entrepreneurs with financial skills and resources.



Expected Impact



200 entrepreneurs
impacted

SANIVATION LIMITED



Waste management & Recycling

Sanivation Limited is a waste treatment company that partners with local governments to help meet the growing waste processing need from septic tanks and pit latrines. Their model is to build and operate fecal sludge treatment plants so that they can be operationally sustainable. Through the KKCF funding, Sanivation will operate and maintain a fecal sludge treatment plant near Kakuma that will convert waste to low-carbon fuel briquettes. This will provide Kakuma with a safe and affordable place to dispose of human waste, while also provide local institutions with a source of sustainable fuel.



Expected Impact



14
institutions
benefit



2500
household
directly
impacted



12 direct
jobs created

03

Local Enterprise Development Window (LED)



TULU TULU TRADERS



Tailoring – school uniforms

Tulu Tulu Traders offers tailoring services in Kakuma town, specializing in school uniforms. Through funding from KKCF, the business is looking to expand training to more tailors to meet the growing demand for tailoring services and to diversify the business to sell wholesale fabric. The tailoring training and apprenticeship will equip refugees and the host community with new skills. In addition, the sale of fabrics on wholesale will reduce the cost, time, and inconvenience of ordering from outside Kakuma.



Expected Impact



10 tailors
trained



4 direct jobs
created

ARTECH EAST AFRICA LIMITED



Financial services – loans

Artech East Africa Ltd. is a financial institution that mobilizes community groups to train them on business, management, and savings models. They are also a lending institution. The company has a branch in Lodwar, and through funding from KKCF, is expanding its operations to Kakuma, where it will work with Micro Small and Medium Entrepreneurs (MSMEs). As a result, small businesses in Kakuma will be able to access capital to expand their businesses.



Expected Impact



12 village
Savings
and Loans
Associations
established



2 direct jobs
created



Ksh 2 million
in loans
provided within
12 months

GATEWAY DIAGNOSIS AND HEALTHCARE LTD



Healthcare – medical services

Gateway Diagnosis and Healthcare Ltd. is a medical clinic that offers a wide range of inpatient and outpatient services including maternity, dental, radiology and ultrasound, pharmacy, and laboratory. Through funding from KKCF, the clinic will provide additional services in the Kakuma-Kalobeyei area, such as ambulances. They also have a dental laboratory, a service that is currently only accessible in Eldoret or Nairobi.



Expected Impact



10 temporary
jobs created



12 direct
jobs created

JUSTIN ARIKE ABRAHAM



Tailoring - African wear

Justin Arike Abraham operates a tailoring shop specializing in African wear for both men and women in Kakuma refugee camp. With the growing demand for professional tailoring services in the area, Justin Arike Abraham is looking to provide fabric and tailoring accessories in Kakuma and relieve the community burden of ordering from Nairobi.



Expected Impact



10 tailors
trained



2 direct jobs
created

KAKUMA MEDICAL CLINIC



Healthcare – medical services

Kakuma Medical Clinic offers a wide range of outpatient and inpatient services such as minor surgery, laboratory services, clinical consultation, ambulance services and a chemist within Kakuma town. The facility, with funding from KKCF, is expanding to offer in-demand services.



Expected Impact



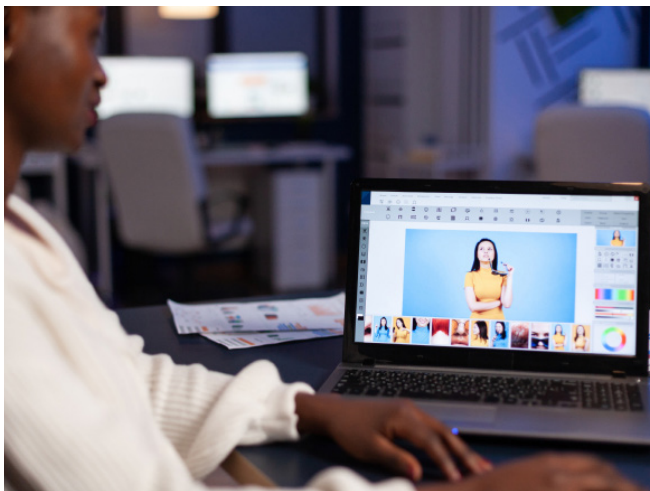
3 direct jobs
created

CLEARFACE PRINTERS



Graphic design and printing

Clearface printers is a graphic design and print company that offers outdoor ads, digital design, branding, and general printing services in Kakuma. With the increasing demand of printing and graphic designs in the area, the company will modernize its shop to provide high-quality printing services in Kakuma.



Expected Impact



1 direct job
created



2 temporary
jobs created

NAWOUNTOS BUILDING CONSTRUCTION ENTERPRISES



Construction – welding/metal joinery

Nawountos Building and Construction Enterprises Ltd. is a hardware company in Kakuma that sells building and construction material. There is a growing demand for welders to serve the growing population in Kakuma, and through the support of KKCF, the company intends to train apprentices and provide the necessary skills to meet the market demand.



Expected Impact



2 direct jobs
created



1 temporary
job created



5 people
trained every 6
months

SHUJAA CUSTOMS PRINT



Graphic design and printing

Shujaa Customs Print offers outdoor ads, graphic designs, branding and general printing in Kakuma. There is a growing need for advertising, printing, and distinctive designs in the Kakuma-Kalobeyei area. Through funding from KKCF, the company is acquiring modern equipment to provide specialized services like garment and large-format printing.



Expected Impact



7 direct and temporary jobs created



50% off for women and youth businesses



4 people trained every quarter

BLUE LIGHT PRINCE ACADEMY



Primary Education

Blue Light Prince Academy offers education services from early childhood development learning to primary school level in the Kakumei-Kalobeyei area. There is a growing demand for quality education services from both the host community and refugees. Blue Light Prince Academy is expanding the school and building boarding facilities.



Expected Impact



4 direct jobs
created



30
temporary
jobs created



450 children
from low-income
families access
quality education
services

MOUNT SAYUN FARM INPUTS AND SUPPLIES AGROVET



Veterinary services and agricultural supplies

Mount Sayun Farm Inputs and Supplies Agrovets offers veterinary clinical services and supply of animal feeds and drugs in Lodwar town. There are currently no licensed agrovets in Kakuma, and through funding from KKCF, the business intends to expand its operations to Kakuma and Kalobeyei. The business will also train the host community and refugees to conduct disease surveillance, deworming and pest control.



Expected Impact



20 people
trained on
animal health
extension
services



20 people
trained on
pastoralist
economies



20 people trained
on new farming
technologies and
agriprenuership

KALOBYEI MAIN MEDICAL CENTRE



Healthcare – medical services

Kalobyei Main Medical Centre offers a wide range of inpatient and outpatient services in Kalobyei including pharmacy, laboratory, nursing services and community public health education. To meet the growing demand for quality healthcare, the facility is acquiring modern medical equipment for its laboratory and maternity units, and establishing a dental unit.



Expected Impact



4 direct jobs
created



1 temporary
job created



500 households
reached with
anti-malaria
strategies

UNITY BAKERY



Food – baking industry

Unity Bakery supplies doughnuts and scones to Kakuma town, Kakuma camp and Kalobeyi camp. There is growing potential for baking services due to a rapidly growing population. As a result, Nice Bakery intends to acquire modern bakery equipment, and expand its facility. With this improvement, the bakery will be able to create more jobs, while making baked goods available at a reasonable price to the host community and refugees.



Expected Impact



3 direct jobs
created



1 temporary
job created



10 youth and
women trained
annually

ITOPRIDE CHEMIST



Healthcare – dispensing chemist

Itopride Chemist provides over-the-counter and prescription medicine in Kakuma. To cater for the increasing demand for quality healthcare, the chemist intends to establish a health clinic. Through KKCF funding, Itopride Chemist will acquire medical equipment for this clinic.



Expected Impact



2 direct jobs
created



2 temporary
jobs created

SAJOP AUTOMOBILE ENTERPRISES



Automobile repair

Sajop Automobile Enterprises repairs and maintains vehicles in Kakuma. The company also provides welding services by producing power towers, steel windows, gates, and signposts. Through funding from KKCF, the enterprise intends to construct a modern garage complete with new equipment and a car wash.



Expected Impact



10 direct
jobs created



5 temporary
jobs created



10 people
trained on
mechanical
repair and
welding

ERUKO SAVINGS AND CREDIT COOPERATIVE SOCIETY LIMITED



Manufacturing – aloe processing

Eruko is a Savings and Credit Cooperative Society (SACCO) that operates in Lodwar town. It provides savings and loans to its members while also creating aloe products as an income generating activity. The SACCO, through funding from KKCF, is developing the aloe value chain in the Kakuma-Kalobeyi area where it intends to construct a warehouse and acquire a processing machine. This will create jobs for the local community, specifically for women and the youth.



Expected Impact



3 direct jobs
created

DAN FABRICATORS



Construction – welding and fabrication

Dan Fabricators offers welding and fabrication services in Kakuma town. The furniture and metalwork market is largely untapped in Kakuma and Kalobeyi. The company, through KKCF funding, intends to acquire a standby generator to counter Kakuma's unreliable power supply. This will ensure that Dan Fabricators is able to work for longer hours, providing quality and affordable finished goods.



Expected Impact



4 direct jobs
created



2 temporary
jobs created



6
apprenticeships
for women and
youth

ATTA NAYECE MEDIA SERVICES LIMITED



Media and broadcasting

Atta Nayece Media Services Ltd. is a local radio station based in Kakuma that has programming in several local languages including Turkana, Swahili, English and Juba Arabic. With the increasing need to reach a wider audience, the radio station, through support of KKCF, intends to strengthen its frequency transmission to reach other parts of Turkana County. This will lead to a significant increase in public information dissemination, especially among the majority youth listeners.



Expected Impact



Increased coverage, reaching more listeners



18-month entrepreneurial program



Interactive, educational, and informative shows in community centers

USAFI GREEN ENERGY LIMITED



Energy – clean cooking

Usafi Green Energy Ltd. is a clean energy company in Kakuma that produces clean cookstoves and briquettes. To meet the high demand for clean cooking solutions in the Kakuma Kalobeyei area, the company will increase its production capacity of cookstoves and briquettes.



Expected Impact



7 direct and
temporary
Jobs created



12,500
people
reached



2,500 cook
stoves produced
per month

GLAP ENTERPRISES



Manufacturing – soap manufacturing

GLAP Enterprises manufactures and sells various types of soap and disinfectants in the Kakuma-Kalobeyei area. Additionally, it produces hair conditioners, baby soap, and hand sanitizers. To meet the demand of personal hygiene products in the area, the company will acquire soap manufacturing equipment that will increase production capacity and diversify its product line.



Expected Impact



5 direct jobs
created



Micro-
entrepreneurs
trained on soap
manufacturing

NEMLON ENTERPRISE



Tailoring

Nemlon Enterprise offers tailoring and dressmaking services in Kakuma town. The increase in population in the Kakuma-Kalobeyi area has meant that there is a huge demand for qualified tailors. Nemlon will bridge this gap by offering training and apprenticeship to refugees and the host community.



Expected Impact



3 direct jobs
created



10
apprenticeships
for youth and
women



6 Training
of Trainers

DEMBU INVESTMENTS



Automobile repair

Dembu Investments started as a motorbike spare parts shop. It has since diversified into providing motor vehicle spare parts and servicing vehicles. Mechanic offerings for vehicles and motorbikes are scarce in Kakuma, with customers traveling to Lodwar and Kitale for service and maintenance. To meet this demand, the company is establishing a modern automobile maintenance and repair facility.



Expected Impact



8 direct jobs
created



2 temporary
jobs created



5
apprenticeships
every 12 months

KAKUMA PEANA BOOKSHOP



Education - bookshop

Kakuma Peana Bookshop provides education materials to schools and tertiary education centers within the Kakuma-Kalobeyi area. To meet the growing demand for quality education services, the bookshop will purchase a large-scale printing machine. This acquisition will enable the business to print the exams for schools across Turkana West, reducing costs to refugee and host community schools while increasing the level of assessments to learners.



Expected Impact



23 direct and
temporary
jobs created



65,000
pupils
reached



50 schools
reached

STEVE KING BAKERS



Food – baking industry

Steve King Bakers provides bread and buns across Turkana County. To meet the need for quality baked goods in the county, the bakery will increase productivity through the acquisition of modern equipment.



Expected Impact



10 direct
jobs created



5 distributors
engaged

LOROT SONS AND TRADERS GENERAL SHOP



Retail

Lorot Sons and Traders General Shop sells consumer products to the residents in Kalobeyei. Through KKCF funding, the retailer intends to expand the business and add a variety of products to meet the growing demand from customers.



Expected Impact



3 direct jobs
created



5 temporary
jobs created

ABDULLE SHOP



Retail

Abdulle Shop sells consumer products to the residents of Kakuma camp. He has also been selected by the World Food Program (WFP) to be a part of the Bamba Chakula project, a mobile payments system that allows refugees to buy food from the local markets with cash from their mobile phones. Through KKCF funding, the retailer intends to expand the business and add a variety of products to meet the growing demand from customers.



Expected Impact



1 direct job
created



2 temporary
jobs created

NEEMA HOTEL



Hospitality

Neema Hotel is a fast-food restaurant in Kakuma Town. To meet the growing demand for restaurant services, the business plans to expand into butchery and grocery services.



Expected Impact



3 direct jobs
created



1 temporary
jobs created



2
apprenticeships
every 12 months

RAMA BEAUTY PARLOUR



Cosmetology

Rama Beauty Parlour offers cosmetology services to residents of Kakuma and Kalobeyei. Through KKCF assistance, the business will add more beauty services and sell beauty products. This will go a long way in meeting the growing demand for the cosmetology services in the area.



Expected Impact



2 direct jobs
created



2 temporary
jobs created



2
apprenticeships
every 12 months



For more information

www.kkcfke.org

Contact details:

KKCF Office Location: 1st floor, KCB building, Kakuma Town.

Mobile Number: +254 794626467

IMPLEMENTED JOINTLY BY



IN PARTNERSHIP WITH



SUPPORTED BY

