

# KKCF Competitive Business Challenge Winners' Showcase



IMPLEMENTED JOINTLY BY



IN PARTNERSHIP WITH



SUPPORTED BY



## About KKCF

The Kakuma Kalobeyei Challenge Fund (KKCF) is a program of the IFC, implemented with AECF, Turkana County Government, and United Nations High Commissioner for Refugees (UNHCR). The five-year program is designed to support private sector investment and unlock the economic potential of refugees and their hosts in Kenya's Turkana County.

## About the Competitive Business Challenge

The competitive business challenge offers incentives to small and medium-sized businesses looking to enter the Kakuma and Kalobeyei area, and use innovative enterprise models to improve essential services and products for people living there.

The competition supports established companies, social enterprises, and local entrepreneurs in implementing commercially viable and sustainable businesses that have the potential to raise incomes, provide goods and services, create jobs and/or improve living standards in both the camp and host community.

## About the Competitive Business Winners

Since its launch in 2019, the KKCF Competitive Business Challenge has awarded funding and training to 121 companies. The first cohort of companies were announced in May 2022, while the second, and final, cohort of businesses were announced in December 2023.



# Homegrown Millers Limited



## Agribusiness

Homegrown Millers Limited is a milling company specializing in the production and distribution of maize meal flour, branded as PAMOJA®. The company targets marginalized and low-income customers, providing affordable and high-quality fortified maize flour primarily used for ugali, a staple food in Kenyan communities. With the support from KKCF, Homegrown Millers Limited is expanding into the Kakuma-Kalobeyi area by establishing a production plant with an animal feed division to utilize byproducts effectively.



## Expected Impact



10,500  
households  
reached



20 tonnes  
produced per  
day

# KENYA BANKERS SACCO



## Financial Services

Kenya Bankers Sacco is a Savings and Credit Cooperative Organization (SACCO) dedicated to providing affordable financial services to members and customers. Regulated by the Sacco Societies Regulatory Authority, Kenya Bankers Sacco oversees eight branches and three sub-branches across Kenya. The company's primary focus is to mobilize deposits, offer economical credit, and educate members on personal finance. With support from KKCF, Kenya Bankers Sacco will extend 4800 cumulative loans and savings services to refugees and the host community in the Kakuma – Kalobeyei area. It will also enroll 300 new members.



## Expected Impact



4800 loans  
and savings  
services



300 new  
members  
enrolled

# LYONORA COMPANY LIMITED



## Agribusiness

Lyonora Company Limited is a woman-owned private agribusiness company that offers innovative and climate-smart solutions to common farming challenges. With the support from KKCF, Lyonora Company Limited will deliver field-based learning on food and nutrition, crop husbandry, post-harvest management, and record keeping. Additionally, the company will supply and install vertical kitchen gardens in households and commercial centers. Through their buy-back option plan, surplus produce purchased from the farmers will be sold in Kakuma and Kalobeyei's open markets.



## Expected Impact



100 households  
receiving  
vertical kitchen  
gardens



400 vertical  
kitchen  
gardens  
supplied and  
installed



20-24  
tonnes  
of fresh  
vegetables  
harvested

# MINGINGO FISH SUPPLIES LIMITED



## Aquaculture

Mingingo Fish Supplies Limited deals in the supply and distribution of fresh and frozen fish. The company sells three main types of fish: Tilapia, Nile Perch and Mackerel. The company also offers structured quality and food safety management trainings to small and medium sized enterprises (SMEs), especially those owned by women and youth. To address business financing limitations, the company offers trade credit to the SMEs to pay back the supplied fish upon sale. With support from KKCF, Mingingo Fish Supplies Ltd will establish an ice plant in Lodwar town, as well as install cold storage depots and satellite distribution centers in Kakuma and Kalobeyei.



## Expected Impact



90 fisherfolk  
supported



26  
permanent  
jobs created



48 tonnes of  
fish aggregated

# KIJANI TESTING LIMITED



## Technology Support

Kijani Testing Limited specialises in providing field trials and market testing services of renewable energy, off-grid appliances and equipment meant to positively impact the lives of potential users. With the support from KKCF, Kijani Testing Limited will set up hubs in Kakuma and Kalobeyi to educate the communities on sustainable technologies and bridge the gap between innovators and potential customers in the region.



## Expected Impact



2 hubs in  
Kakuma and  
Kalobeyi



1,000 people  
reached



12 permanent  
jobs created



# TAKATAKA SOLUTIONS



## Waste Management - recycling

TakaTaka Solutions is a waste management company that collects, sorts, composts, and recycles waste materials across three Kenyan cities. With the support from KKCF, TakaTaka Solutions will expand into the Kakuma-Kaloyebei area and establish a buy-back center to collect illegally dumped waste. The company will also create employment for marginalized and refugee populations, which constitute the largest population in the area.



## Expected Impact



15,000  
households  
reached



75,000  
people  
impacted



100 SMEs  
supported



# ADLEY COMPANY LIMITED



## Automotive Services

Adley Company Limited is a motorcycle and bicycle repair shop that has become a prominent player in Kakuma's automotive and fabrication sector. The company which serves Kakuma town, as well as the Kakuma and Kalobeyei Camps, offers a range of services including spare parts for motorcycles and bicycles. With the support from KKCF, Adley Company Limited will establish a new spare parts shop in Kalobeyei, acquire modern fabrication equipment, and have access to working capital for spare parts procurement.



## Expected Impact



4 permanent  
jobs created



5 internship  
opportunities

# AHMED ABDULE GENERAL MERCHANDISE



## Retail

Ahmed Abdule General Merchandise is a retail outlet trading consumable products and hardware items in Kakuma Camp 2. The outlet is part of the UN World Food Programme's Bamba Chakula scheme, an electronic cash-based food assistance facility for refugees in the Kakuma-Kalobeyei area. It is also a Kenya Commercial Bank (KCB) agency, where refugees collect foodstuffs using preloaded KCB debit/food cards. With the support from KKCF, Ahmed Abdule General Merchandise will establish a second outlet, acquire a transportation cargo van, and increase stock.



## Expected Impact



5 permanent  
jobs created



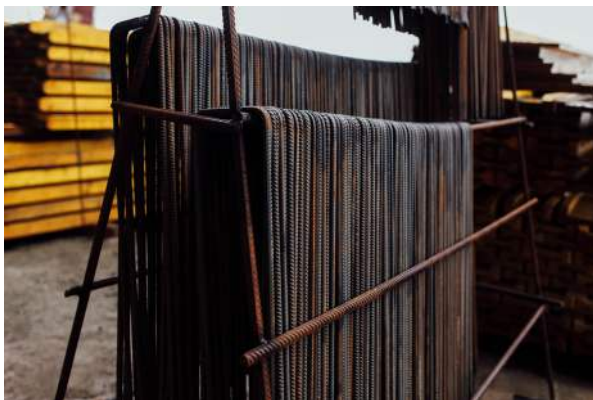
2 temporary  
jobs created

# AKIBERANU ENTERPRISES



## Construction and Retail

Akiberanu Enterprises is a general hardware and merchandise shop located in Kalobeyei. With the growing demand for educational materials, the owner also established a bookshop in Kakuma Camp 1 that caters to the educational needs of school-going children and local schools. With the support from KKCF, Akiberanu Enterprises aims to provide and market carpentry and steel services. To facilitate the anticipated business expansion, Akiberanu Enterprises plans to purchase a Tuk-Tuk vehicle for transportation and delivery purposes.



## Expected Impact



1 permanent  
job created



2 temporary  
jobs created

# AKICHA PRIVATE LIMITED COMPANY



## Retail - apparel

Akicha Private Limited Company is an apparel shop, offering a diverse range of clothing products and assorted household items. With the support from KKCF, the store will expand its current storage capacity, access working capital for bulk purchasing, and enhance merchandise security. This approach will enable the shop to offer price benefits to its customers and create opportunities for additional staffing.



## Expected Impact



2 permanent  
jobs created

# AKIPORO BOOKSHOP AND COMPUTER SERVICES LTD



## Wholesale, Retail and IT Services

Akiporo Bookshop and Computer Services is a bookshop that also provides cybercafé services in Kakuma town. The business serves a varied customer base, including schools, agencies, organizations, as well as local retail shops among others. With the support from KKCF, Akiporo Bookshop and Computer Services will procure additional stock and purchase printing equipment to enable the business to cater to the growing printing needs in the region.



## Expected Impact



2 permanent  
jobs created



1 temporary  
job created

# AKUMAE ENTERPRISE



## Agribusiness - poultry farming

Akumae Enterprise is a poultry farm located in Kakuma town. The business specializes in rearing and selling chicks to farmers in Turkana and the neighbouring counties. The business has grown organically gaining popularity as a reputable indigenous poultry breeder, supplying one to three-month-old chicken to farmers. With the support from KKCF, Akumae Enterprises will be able to increase its capacity to produce eggs and poultry meat, and manage the day-old chicks. This investment is set to create more opportunities for other value chain actors, including bakers, restaurants, egg vendors, and supermarkets.



## Expected Impact



3 permanent  
jobs created



2 temporary  
jobs created



5 youths  
trained semi-  
annually

# AMANI WHOLESALE SHOP



## Retail

Amani shop specializes in the provision of fast-moving consumer products and groceries in Kakuma. The retailer is part of the UN World Food Programme's Bamba Chakula scheme, an electronic cash-based food assistance facility for refugees in the Kakuma-Kalobeyei area. With the support from KKCF, Amani Shop will scale up the business and purchase solar powered freezers to preserve the perishable food stuff.



## Expected Impact



2 permanent  
jobs created



1 temporary  
job created



# AVE MARIA COLLECTION



## Retail - textile

Ave Maria Collection is a clothing and textile business. The business specializes in traditional wear and has over the years expanded to supply clothing and accessories for the diverse communities in the Kakuma-Kalobeyi area. With support from KKCF, Ave Maria Collection will have access to working capital, and procure additional modern tailoring machinery and textiles. The business will be able to train five youths and hire five new employees.



## Expected Impact



5 permanent  
jobs created



5 youths  
trained

# BABA YUSUF SHOP



## Retail - apparel

Baba Yusuf Shop is part of a business network of apparel boutiques, general merchandise and cyber services in the Kakuma-Kalobeyei areas. The shop initially began in Kakuma Camp 3 and served as a central hub for goods distribution. Over the years, the business has experienced substantial growth, evolving into a retail chain with six outlets in Kakuma Camps 3 and 4, and Kalobeyei markets. With the support from KKCF, Baba Yusuf Shop will procure more stock from a wider network of suppliers, which will diversify the product range.



## Expected Impact



3 permanent  
jobs created



2 temporary  
jobs created

# BARACK GENERAL STORE



## Retail

Barack General Store is a general merchandise shop that is part of the UN World Food Programme's Bamba Chakula scheme, an electronic cash-based food assistance facility for refugees in the Kakuma-Kalobeyei area. With the support from KKCF, Barack General Store will construct an additional outlet in Kalobeyei Village 3 and acquire a refrigerator for the new shop.



## Expected Impact



4 permanent  
jobs created



1 temporary  
job created

# BERED ALI DINI



## Construction - hardware

Bered Ali Dini specializes in the sale of construction materials in Kakuma Camp 1. His primary customer base consists of refugees initiating or expanding their ventures. The KKCF funding will support Bered Ali Dini with the necessary working capital and construction resources to expand his business. This move not only offers a convenient way to continue serving his existing customer base, but also positions him to expand into the Kalobeyei area.



### Expected Impact



1 permanent  
job created



1 temporary  
job created

# BRIDGEMOSS INVESTMENT



## Retail

Bridgemoss Investment is a general retail shop that specializes in general foodstuffs, home appliances and cosmetics. The business is the primary retail outlet for hawkers, motorcycle riders, public service vehicle attendants and a significant number of Kakuma Town residents. With the support from KKCF, Bridgemoss Investments will undertake renovation works, procure refrigerators, and install a solar system.



## Expected Impact



4 permanent  
jobs created

# BUJUMBURA SHOP



## Wholesale

Bujumbura shop is a retail and wholesale outlet in Kakuma Camp 3. The business, which specializes in a variety of food items and household goods, is part of the a part of UN World Food Programme's Bamba Chakula scheme, an electronic cash-based food assistance facility for refugees in the Kakuma-Kalobeyi area. With the support from KKCF, Bujumbura Shop will stock the wholesale outlet following expanded storage capacity. From this investment, the business will increase its capacity to serve customers with quality and affordable products consistently.



## Expected Impact



3 permanent  
jobs created

# CAMEL VARIETY INVESTMENT



## Agribusiness - horticultural retail

Camel Variety Investment specializes in the distribution of produce within the Kakuma- Kalobeyi region. These high-quality products are supplied in bulk to high-volume consumers, including grocery stores, schools, and hotels. With the support of the KKCF funding, Camel Variety Investment will establish a larger outlet and acquire a refrigeration container that will enable the business to expand its storage capacity and extend the shelf life of its products.



## Expected Impact



15 permanent  
jobs created



7 temporary  
Jobs



# COMRADES BOUTIQUE



## Tailoring

Comrades Boutique deals in clothing and tailoring services. The business is located in Kakuma town and serves schools, churches, and local institutions among others. With the support from KKCF, Comrades Boutiques will have access to working capital, creating employment and training avenues for local youth and women, as well as extending its market footprint.



## Expected Impact



1 permanent  
job created



1 temporary  
job created

# DEAR SHOP



## Retail

Dear Shop is a general merchandise shop in Kakuma Camp 1 that specializes in the sale of fast-moving consumer goods. The shop is also part of the UN World Food Programme's Bamba Chakula scheme, an electronic cash-based food assistance facility for refugees in the Kakuma-Kalobeyei area. With the support from KKCF, Dear Shop will expand, creating a dedicated space for a restaurant that will meet the growing demand for ready-made food. The funding will also facilitate the installation of reliable solar power to operate the shop's refrigerators.



## Expected Impact



1 permanent  
job created



1 temporary  
job created

# DENIZA MALIYO



## Retail

Deniza Maliyo operates a retail and wholesale shop in Kalobeyei, specializing in fast-moving consumer goods. The shop caters to the needs of 100 refugee households on a monthly basis. It is also part of the UN World Food Programme's Bamba Chakula scheme, an electronic cash-based food assistance facility for refugees in the Kakuma-Kalobeyei area. With the support from KKCF, Deniza Maliyo will be able to ensure the shop's inventory aligns more effectively with the market demand. Additionally, the funding will facilitate the transportation of goods to other traders, expanding her market reach.



## Expected Impact



2 permanent  
jobs created

# DESTINY MOTORBIKES SPARE PARTS



## Automotive Services

Destiny Motorbikes Spare Parts specializes in the sale of motorbike spare parts and repair services. With the support from KKCF, Destiny Motorbikes Spare Parts will expand its garage, accommodate more workers, and improve work efficiency within the garage for increased productivity and more affordable products and services.



## Expected Impact



2 permanent  
jobs created



3 youths  
trained semi-  
annually

# DONATIEN NYANDWI



## Wholesale

Donatien Nyandwi operates a general merchandise wholesale and retail shop in Kakuma Camp 4. The shop provides essential food items and is part of the UN World Food Programme's Bamba Chakula scheme, an electronic cash-based food assistance facility for refugees in the Kakuma-Kalobeyei area. With the support from KKCF, Donatien Nyandwi will increase his stock, acquire a tuk-tuk vehicle to cater for the business transportation needs, and install a solar system to power his business premises.



## Expected Impact



4 permanent  
jobs created



5 temporary  
jobs created



10 traders  
engaged

# ELEGANCE HAIR SALON



## Cosmetology - Salon and barber shop

Elegance Hair Salon is a business that offers affordable and quality haircuts and salon services in the area. With the support from KKCF, Elegance Hair Salon will renovate and upgrade its business premises, as well as procure additional equipment and products that will help increase the quality of its services.



### Expected Impact



3 permanent  
jobs created



6 apprenticeship  
opportunities  
created

# FATHI SHOP



## Retail

Hassan Halimo Mohamed is the proprietor of 'Fathi,' a retail establishment that specializes in a diverse range of fast-moving consumer goods. Notably, the shop also serves as a clean cookstove retailer. With the support from KKCF, Fathi will expand with a second outlet in Kakuma Camp 3. The funding will also facilitate the acquisition of a motorbike to streamline product distribution to traders from the existing Kakuma Camp 2 shop and the new Kakuma Camp 3 shop.



## Expected Impact



2 permanent  
jobs created



1 temporary  
job created



# FASCENT ENTERPRISE



## Retail - apparel

Fascent Enterprise is a clothing boutique shop located in Kakuma, offering a diverse range of products. With the support from KKCF, Fascent Enterprises will source merchandise in larger quantities. This initiative will involve establishing efficient arrangements that streamline the delivery of high-quality bulk consignments to Kakuma. By reducing logistical costs, minimizing inconveniences, and mitigating associated risks, Fascent Enterprise will offer superior quality products at competitive prices.



## Expected Impact



1 permanent  
job created



1 temporary  
job created

# FELISTAS AKAL LOREE



## Retail - Motorcycles

Felistas Akal Loree runs a motorbike retail outlet. In 2019, she entered a partnership with a business partner who provided initial capital, while Felistas Akal Loree managed logistics and business operations. However, she is now ready to be released from the partnership and establish her own business. With the support from KKCF, Felistas Akal Loree will be able to establish an independent motorcycle sales store and acquire four motorcycles for resale.



### Expected Impact



1 Permanent  
job created



3 temporary  
jobs created

# FLAMES FIVE COMPANY LIMITED



## Energy - electronic retail

Flames Five Company Limited trades in electronic equipment, appliances, and mobile phones while also offering phone repair services. When the national grid electricity expanded into the area, there was an exponential growth in the demand for electronics. With support from KKCF, Flames Five Company Limited will be able to meet the new market demand, create more employment opportunities, and train 5 youths every six months.



## Expected Impact



3 permanent  
jobs created



2 temporary  
jobs created



10 technical  
trainees

# GATWECH TUACH GATLOU



## Retail

Gatwech Tuach Gatlou operates a retail shop in Kakuma Camp 1. His shop is part of the UN World Food Programme's Bamba Chakula scheme, an electronic cash-based food assistance facility for refugees in the Kakuma-Kalobeyei area. Gatwech Tuach Gatlou also runs a banking agency that supports refugees access to funds within the camp. With the support from KKCF, he will install solar power in the shop, increase the assortment of foodstuffs, renovate his outlets, and acquire refrigeration equipment.



## Expected Impact



3 permanent  
jobs created

# GORGEOUS ENTERPRISE



## Retail

Gorgeous Enterprise is a retail shop with two outlets in Kakuma Town and Kakuma Camp 1. Gorgeous Enterprise specializes in the sale of diverse household items, assorted retail products, beverages, beauty products, and stationary items. With the support from KKCF, Gorgeous Enterprises will expand one of its outlets by adding storage space and procuring coolers.



## Expected Impact



3 permanent  
jobs created

# HEDAPZ ELECTRICAL WORKS



## Energy - electrical installation

Hedapz Electrical Works is a retail electrical shop that also provides electrical installation services for homes, schools, and businesses. With the support from KKCF, Hedapz Electrical Works will widen its business networks among electricians in Kakuma and Kalobeyei, and increase its capacity to offer wiring services to the market.



## Expected Impact



1 permanent  
job created



3 youths  
trained

# HOMESPUN BOOKSHOP



## Education - bookshop

Homespun Bookshop is a leading supplier of office supplies and stationery in the Kakuma-Kalobeyi area, catering to various customers such as public schools, agencies, NGOs, and government institutions. With the support from KKCF, Homespun Bookshop will expand its business premises, purchase additional stationery stock, and acquire printing equipment to meet the market demand.



## Expected Impact



3 permanent  
jobs created



# GULA AGAMJA KANA



## Wholesale and Retail

Gula Agamja Kana runs a general merchandise shop in Kakuma Camp 1 that has evolved into a vibrant retail and wholesale hub. The business is also part of the UN World Food Programme's Bamba Chakula scheme, an electronic cash-based food assistance facility for refugees in the Kakuma-Kalobeyi area. With the support from KKCF, Gula Agamja Kana will expand his operations into Kakuma Camp 3 and increase his inventory volume.



## Expected Impact



2 permanent  
jobs created



1 temporary  
job created

# MOHAMMED ALIYI JUNDI



## Retail

Mohammed Aliyi Jundi operates two general merchandise retail shops within Kakuma Camp 1. The shops serve 800 refugee households on a monthly basis. They are also part of the UN World Food Programme's Bamba Chakula scheme, an electronic cash-based food assistance facility for refugees in the Kakuma-Kalobeyei area. With the support from KKCF, Mohammed Aliyi Jundi will transform one of his retail shops into a dedicated wholesale outlet and have access to working capital.



## Expected Impact



2 permanent  
jobs created



1 temporary  
job created

# KAGEMA STATIONERS AND GENERAL SUPPLIERS



## Education - bookshop

Kagama Stationers and General Suppliers specialize in the trade of textbooks, catering to educational institutions of all levels. The business has three distinct outlets in Kakuma town, and Kakuma Camps 3 and 4. With the support from KKCF, Kagama Stationers and General Suppliers will acquire and install printing machines that will allow them to expand their range of printing services, and to provide examination materials to local schools.



## Expected Impact



2 permanent  
jobs created

# KONYOKONYO SHOP



## Retail

Konyokonyo Shop is a general merchandise retail outlet in Kalobeyei Village camp 1. The shop currently serves 70 daily customers from Kalobeyei Village 1, 2 and 3. With the support from KKCF, Konyokonyo Shop will have access to working capital, and expand into Kalobeyei Village 3 through the establishment of an outlet. The business will also explore credit arrangements with suppliers.



## Expected Impact



1 permanent  
job created



1 temporary  
job created

# KOSH WHOLESALERS



## Retail

Kosh Wholesalers is a general merchandise shop in Kakuma Camp 3. The shop also supplies wholesale branded bottled water. With support from the KKCF funding, the business will be expanded through the procurement of wholesale stock and a cargo tricycle for efficient goods supply.



## Expected Impact



2 permanent  
jobs created



1 temporary  
job created

# HORSEED WHOLESALERS



## Wholesale

Horseed Wholesalers provides fast-moving consumer commodities in the Kakuma-Kalobeyei area. The business has three outlets located in Kalobeyei Village 1, Kakuma Camp 4, and Kakuma town. With the support from KKCF, Horseed Wholesalers will operationalize an egg depot in Kakuma, access working capital, and restock inventory in the three shops.



## Expected Impact



4 permanent  
jobs created



12 jobs  
sustained

# LEE BABY SHOP



## Retail - baby shop

Lee Baby Shop is a wholesale and retail baby shop in Kakuma Town. The business specializes in a wide range of baby products, including toys, baby clothing, maternity kits, baby feeding kits, and event decorations. The business serves a diverse range of customers, including expectant mothers, agencies, event planners, the local community in Kakuma and Kalobeyei, as well as other retail shops in the area. With the support from KKCF, Lee Baby Shop will establish a second outlet, procure branding and tailoring equipment, and replenish its stock.



## Expected Impact



3 permanent  
jobs created



2 temporary  
jobs created



# LIFTA KENYA LIMITED



## Water Filtration and Recycling

Lifta Kenya Limited specializes in the sourcing, processing and bottling of mineral water. The company's bottling facility is located in Kakuma Town, with plans to scale up its mineral water processing capacity and add a recycling component to address the environmental threat caused by discarded plastic bottles. With the support from KKCF, Lifta Kenya Limited will procure an auto-filling water machine and a polyethylene terephthalate plastic crushing machine that will play a key role in environmental conservation.



## Expected Impact



5 permanent  
jobs created



5 temporary  
jobs created

# LODWAR TUMAINI MEDICAL SERVICES LIMITED



## Healthcare - medical services

Lodwar Tumaini Medical Services Limited is a health facility located in Lodwar that offers a variety of outpatient and in patient services. With support from KKCF, the facility will expand its operations into the Kalobeyi settlement area and set up a fully equipped outpatient center. The support will also go towards acquisition of medical equipment, purchase and installation of solar power, computers for an electronic communication system and patient record management.



### Expected Impact



4 permanent  
jobs created



10 temporary  
jobs created

# LOTETELEIT COMPANY LTD



## Agribusiness - animal feeds

Loteteleit Company Limited specializes in the distribution of animal feeds, which have gained increasing popularity in Turkana due to prolonged periods of drought. These animal feeds are tailored for use by both pastoralists and subsistence farmers who raise livestock in close proximity. The company has established a partnership with small-scale poultry and dairy goat farmers, as well as women groups in Lodwar and the Kakuma-Kalobeyei area. With the support from KKCF, Loteteleit Company Limited will set up a new store in Kakuma.



## Expected Impact



3 permanent  
jobs created



5 new women  
groups  
reached

# LUMA 2000 ACADEMY



## Primary Education

Luma 2000 Academy is a private educational institution that caters to 360 students, offering both day and boarding options. With the support from KKCF, Luma 2000 Academy will construct additional classrooms and a dormitory. This initiative marks the beginning of Luma 2000 Academy's journey toward developing permanent, well-ventilated classrooms that will create a more conducive and enriching learning environment.



## Expected Impact



3 permanent  
staff



15 temporary  
jobs created

# MAMA ROBI MOTORCYCLE SPARES



## Automotive services

Mama Robi Motorcycle Spares is a motorcycle spare parts and repair services dealer located in the heart of Kakuma Town. With the support from KKCF, Mama Robi Motorcycle Spares will increase its capacity to supply motorcycle spare parts in Kalobeyei. The business will also intensify its sales and marketing activities to increase its market share.



## Expected Impact



2 permanent  
jobs created

# MEJAMOE ENTERPRISE



## Agribusiness - cereals

Mejamoe Enterprise trades in cereals and provides flour milling services of various grains, including maize, sorghum, wheat, millet, and sesame seeds. With the support from KKCF, Mejamoe Enterprise will procure additional milling equipment. This additional equipment will enhance the business processing capacity and increase access to food products for the community.



## Expected Impact



2 permanent  
jobs created

# MORUNGULE SECONDARY SCHOOL



## Secondary Education

Morungule Secondary School is a certified private secondary school specializing in serving the unique needs of its students, including school dropouts, teenage mothers, children heading households, and those seeking adult education. As a significant number of these students face financial barriers that hinder their educational pursuits, Morungule Secondary School extends a helping hand by subsidizing school fees. With the support from KKCF, the school will construct four classrooms, an administration block, and four toilets.



## Expected Impact



4 permanent  
jobs created



10 temporary  
jobs created



# MUSTARD SEA GROCERY & HOTEL



## Retail - Grocery and event management

Mustard Sea Grocery and Hotel specializes in both wholesale and retail grocery sales, along with providing event management services. The business caters to a diverse clientele, including organizations, and schools. With the support from KKCF, Mustard Sea Grocery and Hotel will acquire a freezer and additional stock, as well as equipment for the event management side of the business, such as tents, chairs and tables.



## Expected Impact



2 permanent  
jobs created



1 temporary  
job created

# NAKITONGO RETAIL SHOP



## Retail

Nakitongo Retail Shop specializes in the supply of groceries and fresh food items in Kalobeyei. The business maintains a weekly stocking routine, sourcing products from wholesalers in Kakuma. With the support from KKCF, Nakitongo Retail Shop will procure a new refrigerator, renovate the shop and increase stocks.



## Expected Impact



1 permanent  
job created



1 temporary  
job created

# NAKOYO ENTERPRISES



## Retail

Nakoyo Enterprises is a retail shop in Kakuma town. The shop specializes in fast-moving consumer goods. The business serves walk-in customers and institutions, such as schools and the Biashara Centre offices in Kakuma. With the support from KKCF, Nakoyo Enterprises will access additional stock, as well as procure a deep freezer and juice blender.



## Expected Impact



1 permanent  
job created

# NAMITIIR GENERAL CONTRACTORS & SUPPLIERS LTD



## Wholesale - beverages

Namitiir General Contractors & Suppliers Limited is a wholesale beverage-selling business located in Gold Centre, Turkana West Sub County. The business has an established market in Kakuma and surrounding villages such as Naduat, Lokore, and Tulabalany. With the support from KKCF, Namitiir General Contractors & Suppliers Limited will expand the shop, add new shelves, and procure refrigerators



## Expected Impact



2 permanent  
jobs created



## Energy - Liquefied Petroleum Gas (LPG)

Namuu Enterprises specializes in the trading of Liquefied Petroleum Gas (LPG) cooking gas and its associated accessories. There is a notable shortage of LPG cooking gas in the Kakuma region due to distribution challenges, leading the community to depend heavily on charcoal and kerosene for cooking and lighting. With the support from KKCF, Namuu Enterprises will establish seven distributor agencies across Kakuma town and the camps. Retail outlets that will be part of this arrangement will receive a 20% commission on LPG cooking gas sale profits.



### Expected Impact



3 permanent  
jobs created



1 temporary  
job created

# NAMOI TURKAN ENTERPRISE



## Food - baking industry

Namoi Turkan Enterprise is a bakery known for its production of baked and fried pastries. The bakery's presence extends across Kakuma town, Lokangai, and the Kalobeyei camps. With the support from KKCF, Namoi Turkan Enterprise is set to invest in baking equipment and further construction. This investment will mechanize the bakery operations, fostering efficiency and scalability to cater to a broader market.



## Expected Impact



3 permanent  
jobs created



5 temporary  
jobs created



2 apprenticeship  
opportunities  
semi-annually



## Transport - taxi services

Nawi Rides Limited is a taxi service provider based in Turkana County's capital, Lodwar, with a fleet of 15 vehicles. The company offers digital taxi services from their app, available on the Google Play Store and the Apple Store, from which customers can download and request taxi services. The company also offers motorcycle ride services, and courier delivery services. With the support from KKCF, Nawi Rides Limited will procure 6 additional vehicles and open a new operations office in Kakuma.



### Expected Impact



5 permanent  
jobs created



1 temporary  
job created



# NEEMA RETAIL SHOP



## Retail

Neema Retail Shop is a general merchandise shop in Kakuma Town. The business specializes in both the wholesale and retail of various products and food items. The shop also supplies wholesale items to five pastoralist villages surrounding Kakuma and Kalobeyei. With the support from KKCF, Neema Retail Shop will procure a refrigerator, install a power system, and purchase additional stock.



## Expected Impact



1 permanent  
job created



2 temporary  
jobs created

# NGILINGAMOR SHOP



## Retail

Ngilingamor is a general merchandise shop in Kalobeyei that offers various household consumable products. In response to customer demand for more affordable maize flour, Ngilingamor has now expanded to include a posho mill. The business now processes and stocks its competitively priced maize flour. With the support from KKCF, Ngilingamor will be renovated and expanded.



## Expected Impact



1 permanent  
job created

# OASIS HOTEL



## Retail

Oasis Hotel is a retail store in Kakuma town. The shop has established a solid and growing customer base, with a focus on popular products like chilled beverages. However, the shop lacks sufficient refrigeration capacity to support the increasing demand. With the support from KKCF, Oasis Hotel will procure a chest freezer and renovate the outlet.



## Expected Impact



1 permanent  
job created

# OMEGA PHOTO STUDIO AND COMPUTER SERVICES



## Photography- photo studio

Omega Photo Studio and Computer services is located in Kakuma town. The business has grown to offer a variety of products and services, including photography, printing, photocopying, and lamination among others. With the support from KKCF, Omega Photo Studio will update its services by purchasing modern equipment as well as an additional tent to house the business.



## Expected Impact



1 permanent  
job created



2 temporary  
jobs created

# OROPOI MEDICARE LIMITED



## Healthcare - medical services

Oropoi Medicare Limited is a longstanding healthcare provider in Kakuma town, committed to delivering a comprehensive array of healthcare services. These services include child immunization, health education programs, and general medical treatment for adults and children. With the support from KKCF, Oropoi Medicare Limited will procure medical equipment and essential medications, and undergo vital refurbishments.



## Expected Impact



2 permanent  
jobs created



Internship  
opportunities  
created

# POULTRY GREEN GROCERY



## Agribusiness - cereals and horticulture produce

Poultry Green Grocery is a wholesale shop in Kakuma Camp 1. The business trades in cereals fresh produce sourced from various regions. The shop's client base, includes institutional customers, walk-in customers, and Bamba Chakula agents. With the support from KKCF, Poultry Green Grocery will set up a new store in Kalobeyei and introduce herbs to its product offering.



## Expected Impact



2 permanent  
jobs created



10 additional  
traders  
engaged

# PALET KUOL PUOT



## Retail

Palet Kuol Puot operates a retail store in Kakuma Camp 1. The shop, which serves 200 households, specializes in essential food items and fast-moving consumer goods. The store is part of the UN World Food Programme's Bamba Chakula scheme, an electronic cash-based food assistance facility for refugees in the Kakuma-Kalobeyi area. With the support from KKCF, Palet Kuol Puot will expand his shop, install a solar system that will provide reliable energy, and diversify his product offering.



## Expected Impact



2 permanent  
jobs created



1 temporary  
job created



# PROMISE DEVELOPMENT SERVICES



## Aquaculture - fish retail

Promise Development Services is a wholesale and retail fish trading. The business initially sold fish from Lake Turkana to vendors in Kakuma and Lodwar before expanding to fish aggregation and transportation. With the support from KKCF, Promise Development Services will expand its product range, increase purchase volumes, and lower transport costs. The business will also create employment opportunities through engaging distributors.



### Expected Impact



3 temporary  
jobs created



# REBECCA ATHIENG PANCHOL



## Retail

Rebecca Athieng Panchol runs a general shop that specializes in fast-moving consumer goods in Kakuma Camp 1. The shop is also part of the UN World Food Programme's Bamba Chakula scheme, an electronic cash-based food assistance facility for refugees in the Kakuma-Kalobeyei area. With support from KKCF, Rebecca Athieng Panchol will expand her business to serve more customers by renovating and constructing more storage space.



## Expected Impact



1 permanent  
job created

# RONEX VIEW GRILL



## Hospitality

Ronex View Grill is a restaurant that serves a diverse variety of food and beverages in Kakuma Town. The business also offers outside catering services for social and corporate events. With support from KKCF, the business will scale up its operations by completing ongoing construction works, procure additional restaurant equipment, and purchase tents and seats for the events management component of the business. The investment will also support the business to increase its sit-in capacity from the current available 30 seater capacity to a 70 seater capacity restaurant.



## Expected Impact



6 permanent  
jobs created



6 temporary  
jobs created

# RIHUM COMPUTER SOLUTIONS



## Technology - computer and phone repair

Rihum Computer Solutions is a cybercafé and phone repair business in Kakuma. Recognizing the demand for computer skills, the business initiated a training program, providing apprenticeships and opportunities for young individuals interested in computer and phone repair. With the support from KKCF, Rihum Computer Solutions will renovate their shop procure phone spare parts, and printing machinery to meet the printing needs of the region.



## Expected Impact



2 permanent  
jobs created



3 temporary  
jobs created



20 students  
trained

# SAGAL SHOP



## Retail

Sagal shop is a general merchandise business in Kakuma Camp 1 that sells household items and various food commodities. The shop is also part of the UN World Food Programme's Bamba Chakula scheme, an electronic cash-based food assistance facility for refugees in the Kakuma-Kalobeyei area. Sagal Shop has two outlets: one outlet fully dedicated to serving Bamba Chakula clients, while the other outlet supplies a variety of consumer and household goods. With the support from KKCF, Sagal Shop will have access to working capital and additional stock. It will also install a solar system that will cater to the shops' power needs.



## Expected Impact



2 permanent  
jobs created

# SALAMA ENTERPRISE



## Retail - apparel

Salama Enterprise specializes in the trade of second-hand clothing. The enterprise, which caters to retail and wholesale customers, has six outlets strategically positioned in Kakuma Camps 1 and 3. With the support from KKCF, Salama Enterprise will target and market his wholesale products to smaller scale second-hand clothes vendors.



## Expected Impact



3 permanent  
jobs created



1 temporary  
job created

# SAMOW HARDWARE SHOP



## Retail - construction and beverages

Samow Hardware Shop operates as a combined hardware and beverage store. The business, which operates from a semi-permanent structure, lacks access to the national electricity grid. With the support from KKCF, Samow Hardware Shop will install solar power, as well as procure an array of hardware materials and a diverse range of beverages. This support will enable Samow Hardware Shop to raise reorder thresholds, reduce order frequency, enhance cash flow, and meet customer demand more effectively in Kakuma Camp 3 and Kalobeyei Village 3.



## Expected Impact



3 permanent  
jobs created



1 temporary  
jobs created

# SAM CONNECTIONS



## Automotive Services

Sam Connections is a motorcycle spares and repair service shop in Kakuma Town. Although the business does not stock any motorcycles in their premises, they facilitate the purchase of motorcycles for customers in the area. With the support from KKCF, Sam Connections will set up an affordable credit scheme for their trusted customers, which will increase access to motorbike ownership and, in turn, reduce transport costs in Kakuma. In the long run, Sam Connections plans to increase its motorcycle inventory.



## Expected Impact



2 permanent  
jobs created



3 temporary  
jobs created



8 youth  
trained

# SABE MOTORS



## Automotive Services

Sabe Motors is a shop that deals with the supply of motorcycle spare parts and repair services. With support from the KKCF funding, Sabe Motors will expand the enterprise into a wholesale business. The business will also hire additional staff, as well as train young people in motorbike repair.



## Expected Impact



4 permanent  
jobs created



4 youths trained  
semi-annually



# SAMUEL NYIMPAE



## Retail

Samuel Nyimpaye manages a general merchandise retail shop in Kakuma Camp 4. The business specializes in fast-moving consumer goods, primarily catering to the refugee community. With the support from KKCF, Samuel Nyimpae will expand his shop to include a wholesale division, which will enhance its capacity to meet market demands and offer competitive products and services. This investment underscores the shop's commitment to accommodate the evolving needs of the local community and improve its role as a reliable supplier within the region.



## Expected Impact



4 permanent  
jobs created

# SILO AGROVET LIMITED



## Agribusiness - animal feeds

Silo Agrovet Limited specializes in the provision of high-quality animal health products and services, quality feeds, and extension services. The business has established 35 agents in Turkana North, West, and Central. Currently, agro-vets in the region source their products from as far as Nairobi. With the support from KKCF, Silo Agrovet Limited will procure and install livestock feeding mill equipment in Kakuma. The Kakuma operation is expected to raise demand for the company's products and open the business to more agents and outlets.



## Expected Impact



9 permanent  
jobs created



70 tonnes of  
feeds sold

# SKAWAR VENTURES



## Agribusiness - honey processing

Skawar Ventures is a honey processing business in Kakuma Town. The business harvests, processes and packages honey sourced from their hives and from local farmers in the region. With the support from KKCF, Skawar Ventures will set up an apiary in Kakuma. This investment will lead to employment opportunities and skills training for community members. By increasing the local production of honey, the business will contribute to better pricing and accessibility of the commodity.



### Expected Impact



2 permanent  
jobs created



30 hive apiaries  
operationalised

# SWEETWATER TRADING & SUPPLIES ENTERPRISES



## Retail

Sweetwater Trading & Supplies Enterprises is a retail shop and butchery with two outlets in Kakuma Town and Kakuma Camp 2. The outlet in Kakuma Camp 2 is part of the UN World Food Programme's Bamba Chakula scheme, an electronic cash-based food assistance facility for refugees in the Kakuma-Kalobeyi area. The business supplies household items, beverages, and food commodities to local organizations, government institutions, and the general public. With the support from KKCF, Sweetwater Trading & Supplies Enterprises will access additional working capital and procure equipment.



## Expected Impact



2 permanent  
jobs created

# TARACH VIEW ENTERPRISES LTD



## Retail

Tarach View Enterprises Limited is a woman-owned mini-supermarket in Kakuma. Initially starting as a small retail shop, Tarach has grown to cater to approximately 100 customers daily. The business offers a wide range of household products, including foodstuffs, electronics, and personal care items. The business has expanded its operations to include perishables. With the support from KKCF, Tarach will construct an extension to reduce congestion, acquire refrigerators and display fixtures, and implement a modern stock management system.



## Expected Impact



7 permanent  
jobs created

# TURKANA COLLEGE OF TECHNICAL AND BUSINESS STUDIES LIMITED



## Education

Turkana College of Technical and Business Studies Limited provides diploma and certificate program courses in agriculture, business management, and accountancy among others. Accredited under the Technical and Vocational Education and Training (TVET) framework, the institution is certified to deliver diploma and certificate courses for Kenya National Examination Council (KNEC), Kenya Accounts and Secretaries National Examination Board (KASNEB), and Kenya Institute of Supplies Management (KISM). With support from KKCF, Turkana College of Technical and Business Studies Limited will construct new classrooms and a computer lab.



## Expected Impact



10 permanent  
jobs created



20 temporary  
jobs created

# TURKANA DRIVING SCHOOL



## Education - Driving School

Turkana Driving School is a school in Kakuma that currently relies on shared vehicles between Kakuma and Lodwar. Over the years, the demand for driving services in Kakuma and Kalobeyi has risen, supported by the Turkana County Government and Constituency Development Fund (CDF) through technical skills bursaries. With the support from KKCF, Turkana Driving School will acquire a dedicated motor vehicle for the Kakuma-based driving school, construct a perimeter wall for enhanced security and branding, and integrate computers and accessories.



## Expected Impact



10 youths on  
scholarship  
annually



5 temporary  
jobs created

# TURU COMPUTER TRAINING CENTRE



## ICT Education

Turu Computer Training Centre is a computer accessories shop and cybercafe in Kakuma Town. The business offers multiple services, including hardware repairs, photocopying, photo production and trainings on computer packages. With support from KKCF, Turu Computer Training Centre will be able to employ two additional staff, and train young people on ICT skills.



## Expected Impact



2 permanent  
jobs created



5 youths  
trained every  
six months



# WANDEY COMPANY LIMITED



## Energy - Solar and electrical

Wandey Company Limited has a retail and wholesale outlet that specializes in the sale of electrical accessories, electronics, mobile phones, and power installation services in Kakuma. The business is also a certified Multichoice Satellite dealer and provides installation services in the market. With the support from KKCF, Wandey Company Limited will scale its business, strengthen the supply chain of solar products, and market its products and services to a larger market.



## Expected Impact



2 permanent  
jobs created



2 internship  
opportunities  
created

# WHOLENESS FASHION AND DESIGN



## Retail - apparel

Wholeness Fashion and Design is a retail apparel shop located in Kakuma town. The business caters to the demand for affordable and diverse second-hand clothing in the Kakuma-Kalobeyei area, while also providing new clothing options for individuals. With the support from KKCF, the business will be able to cover working capital, asset finance and renovation of their business premises.



## Expected Impact



1 permanent  
job created



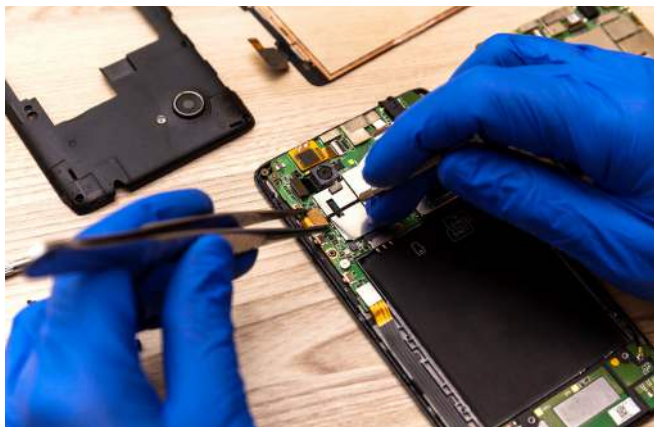
1 temporary  
job created

# YOUNG ELECTRONICS



## Energy - electronic retail

Young Electronics is an electronics retail and repair shop in Kakuma town. The company is also a Star Times accredited dealer that distributes decoders, aerials, and satellite dishes. With support from the KKCF funding, Young Electronics will open a new shop in Kakuma Camp 4, and bulk purchase electronic goods.



## Expected Impact



2 permanent  
jobs created



1 temporary  
job created

# ZOE SHOP



## Construction - carpentry and fabrication

Zoe Shop is a carpentry and steel fabrication business that specializes in creating a wide range of products while also offering welding services. The business currently serves approximately 50 walk-in clients, with its growth attributed to word-of-mouth referrals. With the support from KKCF, Zoe Shop will access essential working capital, expand the workshop, acquire new carpentry and metal fabrication equipment.



### Expected Impact



3 permanent  
jobs created



1 casual job  
created



6 apprentice  
opportunities  
created

# SUNKEN LIMITED



## Energy - clean cooking

Sunken Ltd. is a producer of energy-saving cooking stoves, specifically targeting low-income earners. The company through funding from KKCF is scaling up the production and distribution of cookstoves, within the Kakuma and Kalobeyi area. This will create jobs for the local community specifically for women and the youth, while reducing indoor smoke, and resultant respiratory illness at household level.



## Expected Impact



15,000  
households  
reached



75,000  
people  
impacted



100 SMEs  
supported

# ZIWANI POULTRY ENTERPRISE LIMITED



## Agribusiness – poultry farming

Ziwani Poultry Enterprise Ltd. is an agribusiness that supports small holder farmers to produce improved chicken and duck breeds. The agribusiness, through the support of KKCF, is improving the chicken value chain in the Kakuma-Kalobeyi area by linking farmers to markets, and providing equipment and services like hatcheries and an abattoir. The company will create jobs and improve the capacity of smallholder farmers.



## Expected Impact



2,024  
households  
reached



10,120  
people  
impacted



58 direct  
jobs created

# RENEWVIA ENERGY KENYA LIMITED



## Energy – solar mini grids

Renewvia Energy Kenya Ltd. is an energy company that designs and constructs solar mini grids, supplying underserved communities with reliable and affordable electricity. The company has a presence in Kakuma where they have supplied electricity to households, businesses, and public and private institutions such as NGOs, schools, clinics, and churches. The company, through KKCF funding, is expanding their capacity while increasing connections in the Kalobeyei settlement area.



## Expected Impact



2,600  
households  
connected



225 SMEs  
connected



483 tonnes  
of carbon  
dioxide  
emission  
reduced

# RAFODE LIMITED



## Financial services – green loans

Rafode Limited is a micro-finance company that provides financial services and renewable energy products to low-income rural communities. The company also provides credit to micro and small businesses. Through KKCF funding, Rafode Limited is expanding its activities to refugees in Kakuma Camp and Kalobeyei Settlement scheme, improving access to affordable financial services and quality renewable energy products.



## Expected Impact



3,000  
households  
reached



50 jobs  
created  
through  
support to  
SMEs



24 direct  
jobs created



# THE HIVE LIMITED



## Agribusiness – beekeeping/apiculture

The Hive Limited is a leading specialist in modern beekeeping equipment and beekeeping services in Kenya. The company works closely with beekeepers, focusing on increasing production and quality of bee products such as honey and beeswax. The company, through KKCF funding, will tap into the huge beekeeping potential in Kakuma and Kalobeyei through a commercial beekeeping hub that will provide economic and nutritional benefits among refugees and host communities.



## Expected Impact



100 new  
beekeeping  
trainers



1600  
farmers  
reached



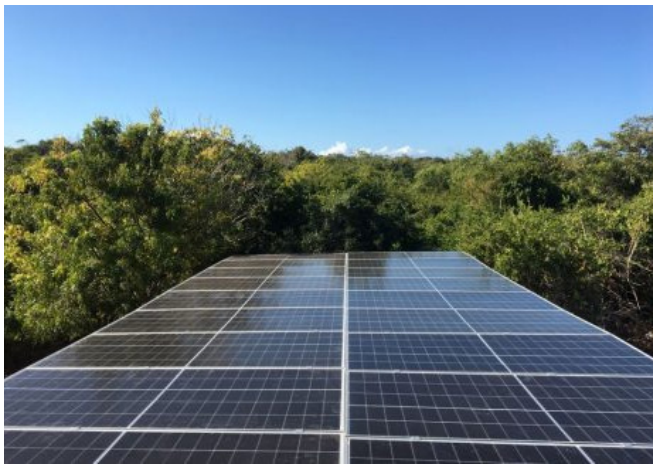
22 direct  
jobs created

# GREEN INNOVATION VENTURES ENTERPRISES LIMITED (GIVE LTD)



## Energy – solar rooftop systems

GIVE LTD is an energy and technology company that builds and installs stand-alone solar rooftop systems to provide electricity to enterprises and households. The company, through KKCF funding, is bringing its solar rooftop component systems to the Kakuma and Kalobeyei refugee settlement and surrounding host community, which will accelerate the uptake of reliable electricity.



## Expected Impact



1500 people  
directly  
benefit each  
month



200 SMEs  
electrified



60 direct  
jobs created

# WASTE ELECTRICAL AND ELECTRONIC EQUIPMENT CENTRE (WEEE CENTRE)



## E-Waste Management

Waste Electrical and Electronic Equipment Center (WEEE Centre) is involved in e-waste recycling by safely collecting and dismantling old electronics to recover raw materials for recycling into new electronic products. This social enterprise, through funding from KKCF, is setting up a training center that will equip the youth—especially young women—in Kakuma and Kalobeyei with skills in digital literacy, ICT repair and maintenance of electronics, computers and solar equipment.



## Expected Impact



2 training  
centres  
established



2,080 youth  
trained



104 direct  
jobs created

# KIDOGO INNOVATION



## Education - childcare

Kidogo Innovation uses a social franchise model to partner with entrepreneurial women to help them start or improve their own early childhood education micro-businesses. Through funding from KKCF, Kidogo Innovation is adapting its unique model to the Kakuma-Kalobeyei area, providing skills to women to run their own childcare micro-businesses and guaranteeing safe and quality childcare in the area.



## Expected Impact



2500  
children  
reached



70  
franchisees  
supported



100 micro  
businesses  
established

# HYDROPONICS AFRICA LIMITED



## Agribusiness- hydroponics

Hydroponics Africa Ltd. installs simplified, cost-effective hydroponic farming solutions that deliver value through less water usage, reduced labor and land requirements, and increased crop yield. Through funding from KKCF, the company is setting up a centralized hydroponic farm which will be used for production, training, and value addition.



## Expected Impact



720,000  
kgs of  
fresh farm  
produce  
annually



188,000  
livestock  
fodder  
produced  
annually



1,000  
people  
trained.

# K DE IGRATIUM INTERNATIONAL LIMITED (KDII LTD)



## Health – hygiene products

K De Igratium International Ltd. (KDII Ltd) addresses menstrual health challenges by supplying reusable sanitary towels that reduce the cost in low-income areas. Through funding from KKCF, KDII Ltd. is setting up a production facility and a distribution center in the Kakuma-Kalobeyei area and creating direct employment to the host community and refugees.



## Expected Impact



5 stockists  
supported



8000  
households  
reached



3.6 million  
disposable  
sanitary towels  
saved from the  
environment

# WESSEX SOCIAL VENTURES (WSV)



## Health - eyecare

Wessex Social Ventures (WSV) creates and scales community-owned businesses in a number of sectors, including health, agriculture and renewable energy. WSV also produces DOT Glasses which are low-cost adjustable eyeglasses that are provided through a network of local retailers. Through KKCF funding, WSV is building a sustainable, self-financing network of micro-entrepreneurs to test vision and dispense glasses in the Kakuma-Kalobeyei area. This will create jobs, while also providing opportunities for improved vision in both the refugee and host communities.



## Expected Impact



51,000 people  
directly impacted



18 direct  
jobs created



# INKOMOKO KENYA



## Financial Services - Loans

Inkomoko Kenya is a social enterprise that provides investment products and consulting/training services in underserved areas, including Kakuma-Kalobeyi. Through funding from KKCF, the company will equip entrepreneurs with financial skills and resources.



## Expected Impact



200 entrepreneurs  
impacted



# SANIVATION LIMITED



## Waste management & Recycling

Sanivation Limited is a waste treatment company that partners with local governments to help meet the growing waste processing need from septic tanks and pit latrines. Their model is to build and operate fecal sludge treatment plants so that they can be operationally sustainable. Through the KKCF funding, Sanivation will operate and maintain a fecal sludge treatment plant near Kakuma that will convert waste to low-carbon fuel briquettes. This will provide Kakuma with a safe and affordable place to dispose of human waste, while also provide local institutions with a source of sustainable fuel.



## Expected Impact



14  
institutions  
benefit



2500  
household  
directly  
impacted



12 direct  
jobs created

# TULU TULU TRADERS



## Tailoring – school uniforms

Tulu Tulu Traders offers tailoring services in Kakuma town, specializing in school uniforms. Through funding from KKCF, the business is looking to expand training to more tailors to meet the growing demand for tailoring services and to diversify the business to sell wholesale fabric. The tailoring training and apprenticeship will equip refugees and the host community with new skills. In addition, the sale of fabrics on wholesale will reduce the cost, time, and inconvenience of ordering from outside Kakuma.



### Expected Impact



10 tailors  
trained



4 direct jobs  
created

# GATEWAY DIAGNOSIS AND HEALTHCARE LTD



## Healthcare – medical services

Gateway Diagnosis and Healthcare Ltd. is a medical clinic that offers a wide range of inpatient and outpatient services including maternity, dental, radiology and ultrasound, pharmacy, and laboratory. Through funding from KKCF, the clinic will provide additional services in the Kakuma-Kalobeyi area, such as ambulances. They also have a dental laboratory, a service that is currently only accessible in Eldoret or Nairobi.



### Expected Impact



10 temporary  
jobs created



12 direct  
jobs created

# JUSTIN ARIKE ABRAHAM



## Tailoring - African wear

Justin Arike Abraham operates a tailoring shop specializing in African wear for both men and women in Kakuma refugee camp. With the growing demand for professional tailoring services in the area, Justin Arike Abraham is looking to provide fabric and tailoring accessories in Kakuma and relieve the community burden of ordering from Nairobi.



## Expected Impact



10 tailors  
trained



2 direct jobs  
created

# KAKUMA MEDICAL CLINIC



## Healthcare – medical services

Kakuma Medical Clinic offers a wide range of outpatient and inpatient services such as minor surgery, laboratory services, clinical consultation, ambulance services and a chemist within Kakuma town. The facility, with funding from KKCF, is expanding to offer in-demand services.



## Expected Impact



3 direct jobs  
created

# CLEARFACE PRINTERS



## Graphic design and printing

Clearface printers is a graphic design and print company that offers outdoor ads, digital design, branding, and general printing services in Kakuma. With the increasing demand of printing and graphic designs in the area, the company will modernize its shop to provide high-quality printing services in Kakuma.



## Expected Impact



1 direct job  
created



2 temporary  
jobs created

# NAWONTOS BUILDING CONSTRUCTION ENTERPRISES LIMITED



## Construction – welding/metal joinery

Nawontos Building and Construction Enterprises Ltd. is a hardware company in Kakuma that sells building and construction material. There is a growing demand for welders to serve the growing population in Kakuma, and through the support of KKCF, the company intends to train apprentices and provide the necessary skills to meet the market demand.



### Expected Impact



2 direct jobs  
created



1 temporary  
job created



5 people  
trained every 6  
months



# SHUJAA CUSTOMS PRINT



## Graphic design and printing

Shujaa Customs Print offers outdoor ads, graphic designs, branding and general printing in Kakuma. There is a growing need for advertising, printing, and distinctive designs in the Kakuma-Kalobeyei area. Through funding from KKCF, the company is acquiring modern equipment to provide specialized services like garment and large-format printing.



## Expected Impact



7 direct and temporary jobs created



50% off for women and youth businesses



4 people trained every quarter



# BLUE LIGHT PRINCE ACADEMY



## Primary Education

Blue Light Prince Academy offers education services from early childhood development learning to primary school level in the Kakumei-Kalobeyi area. There is a growing demand for quality education services from both the host community and refugees. Blue Light Prince Academy is expanding the school and building boarding facilities.



## Expected Impact



4 direct jobs  
created



30  
temporary  
jobs created



450 children  
from low-income  
families access  
quality education  
services

# MOUNT SAYUN FARM INPUTS AND SUPPLIES AGROVET



## Veterinary services and agricultural supplies

Mount Sayun Farm Inputs and Supplies Agrovets offers veterinary clinical services and supply of animal feeds and drugs in Lodwar town. There are currently no licensed agrovets in Kakuma, and through funding from KKCF, the business intends to expand its operations to Kakuma and Kalobeyei. The business will also train the host community and refugees to conduct disease surveillance, deworming and pest control.



## Expected Impact



20 people  
trained on  
animal health  
extension  
services



20 people  
trained on  
pastoralist  
economies



20 people trained  
on new farming  
technologies and  
agripreneurship

# KALOBEYEI MAIN MEDICAL CENTRE



## Healthcare – medical services

Kalobyei Main Medical Centre offers a wide range of inpatient and outpatient services in Kalobyei including pharmacy, laboratory, nursing services and community public health education. To meet the growing demand for quality healthcare, the facility is acquiring modern medical equipment for its laboratory and maternity units, and establishing a dental unit.



## Expected Impact



4 direct jobs created



1 temporary job created



500 households reached with anti-malaria strategies

# NICE BAKERY



## Food – baking industry

Nice Bakery supplies doughnuts and scones to Kakuma town, Kakuma camp and Kalobeyei camp. There is growing potential for baking services due to a rapidly growing population. As a result, Nice Bakery intends to acquire modern bakery equipment, and expand its facility. With this improvement, the bakery will be able to create more jobs, while making baked goods available at a reasonable price to the host community and refugees.



### Expected Impact



3 direct jobs  
created



1 temporary  
job created



10 youth and  
women trained  
annually

# ITOPRIDE CHEMIST



## Healthcare – dispensing chemist

Itopride Chemist provides over-the-counter and prescription medicine in Kakuma. To cater for the increasing demand for quality healthcare, the chemist intends to establish a health clinic. Through KKCF funding, Itopride Chemist will acquire medical equipment for this clinic.



## Expected Impact



2 direct jobs  
created



2 temporary  
jobs created

# SAJOP AUTOMOBILE ENTERPRISES



## Automobile repair

Sajop Automobile Enterprises repairs and maintains vehicles in Kakuma. The company also provides welding services by producing power towers, steel windows, gates, and signposts. Through funding from KKCF, the enterprise intends to construct a modern garage complete with new equipment and a car wash.



## Expected Impact



10 direct  
jobs created



5 temporary  
jobs created



10 people  
trained on  
mechanical  
repair and  
welding

# ERUKO SAVINGS AND CREDIT COOPERATIVE SOCIETY LIMITED



## Manufacturing – aloe processing

Eruko is a Savings and Credit Cooperative Society (SACCO) that operates in Lodwar town. It provides savings and loans to its members while also creating aloe products as an income generating activity. The SACCO, through funding from KKCF, is developing the aloe value chain in the Kakuma-Kalobeyi area where it intends to construct a warehouse and acquire a processing machine. This will create jobs for the local community, specifically for women and the youth.



## Expected Impact



3 direct jobs  
created



# DAN FABRICATORS



## Construction – welding and fabrication

Dan Fabricators offers welding and fabrication services in Kakuma town. The furniture and metalwork market is largely untapped in Kakuma and Kalobeyi. The company, through KKCF funding, intends to acquire a standby generator to counter Kakuma's unreliable power supply. This will ensure that Dan Fabricators is able to work for longer hours, providing quality and affordable finished goods.



### Expected Impact



4 direct jobs  
created



2 temporary  
jobs created



6  
apprenticeships  
for women and  
youth



# ATTA NAYECE MEDIA SERVICES LIMITED



## Media and broadcasting

Atta Nayece Media Services Ltd. is a local radio station based in Kakuma that has programming in several local languages including Turkana, Swahili, English and Juba Arabic. With the increasing need to reach a wider audience, the radio station, through support of KKCF, intends to strengthen its frequency transmission to reach other parts of Turkana County. This will lead to a significant increase in public information dissemination, especially among the majority youth listeners.



## Expected Impact



Increased coverage, reaching more listeners



18-month entrepreneurial program



Interactive, educational, and informative shows in community centers

# USAFI GREEN ENERGY LIMITED



## Energy – clean cooking

Usafi Green Energy Ltd. is a clean energy company in Kakuma that produces clean cookstoves and briquettes. To meet the high demand for clean cooking solutions in the Kakuma Kalobeyei area, the company will increase its production capacity of cookstoves and briquettes.



## Expected Impact



7 direct and  
temporary  
Jobs created



12,500  
people  
reached



2,500 cook  
stoves produced  
per month

# GLAP ENTERPRISES



## Manufacturing – soap manufacturing

GLAP Enterprises manufactures and sells various types of soap and disinfectants in the Kakuma-Kalobeyi area. Additionally, it produces hair conditioners, baby soap, and hand sanitizers. To meet the demand of personal hygiene products in the area, the company will acquire soap manufacturing equipment that will increase production capacity and diversify its product line.



### Expected Impact



5 direct jobs  
created



Micro-  
entrepreneurs  
trained on soap  
manufacturing

# NEMLON ENTERPRISE



## Tailoring

Nemlon Enterprise offers tailoring and dressmaking services in Kakuma town. The increase in population in the Kakuma-Kalobeyi area has meant that there is a huge demand for qualified tailors. Nemlon will bridge this gap by offering training and apprenticeship to refugees and the host community.



## Expected Impact



3 direct jobs  
created



10  
apprenticeships  
for youth and  
women



6 Training  
of Trainers

# DEMBU INVESTMENTS



## Automobile repair

Dembu Investments started as a motorbike spare parts shop. It has since diversified into providing motor vehicle spare parts and servicing vehicles. Mechanic offerings for vehicles and motorbikes are scarce in Kakuma, with customers traveling to Lodwar and Kitale for service and maintenance. To meet this demand, the company is establishing a modern automobile maintenance and repair facility.



### Expected Impact



8 direct jobs  
created



2 temporary  
jobs created



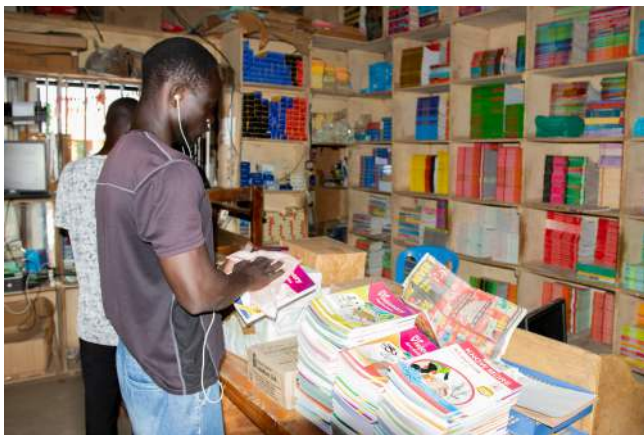
5  
apprenticeships  
every 12 months

# KAKUMA PEANA BOOKSHOP



## Education - bookshop

Kakuma Peana Bookshop provides education materials to schools and tertiary education centers within the Kakuma-Kalobeyi area. To meet the growing demand for quality education services, the bookshop will purchase a large-scale printing machine. This acquisition will enable the business to print the exams for schools across Turkana West, reducing costs to refugee and host community schools while increasing the level of assessments to learners.



## Expected Impact



23 direct and  
temporary  
jobs created



65,000  
pupils  
reached



50 schools  
reached

# STEVE KING BAKERS



## Food – baking industry

Steve King Bakers provides bread and buns across Turkana County. To meet the need for quality baked goods in the county, the bakery will increase productivity through the acquisition of modern equipment.



## Expected Impact



10 direct  
jobs created



5 distributors  
engaged



# NAPOROTO ENTERPRISES



## Retail

Naporoto Enterprises sells consumer products to the residents in Kalobeyei. Through KKF funding, the retailer intends to expand the business and add a variety of products to meet the growing demand from customers.



## Expected Impact



3 direct jobs  
created



5 temporary  
jobs created



# ABDULLE SHOP



## Retail

Abdulle Shop sells consumer products to the residents of Kakuma camp. He has also been selected by the World Food Program (WFP) to be a part of the Bamba Chakula project, a mobile payments system that allows refugees to buy food from the local markets with cash from their mobile phones. Through KKCF funding, the retailer intends to expand the business and add a variety of products to meet the growing demand from customers.



## Expected Impact



1 direct job  
created



2 temporary  
jobs created

# NEEMA HOTEL



## Hospitality

Neema Hotel is a fast-food restaurant in Kakuma Town. To meet the growing demand for restaurant services, the business plans to expand into butchery and grocery services.



## Expected Impact



3 direct jobs  
created



1 temporary  
jobs created



2  
apprenticeships  
every 12 months

# RAMA BEAUTY PARLOUR



## Cosmetology

Rama Beauty Parlour offers cosmetology services to residents of Kakuma and Kalobeyei. Through KKCF assistance, the business will add more beauty services and sell beauty products. This will go a long way in meeting the growing demand for the cosmetology services in the area.



## Expected Impact



2 direct jobs  
created



2 temporary  
jobs created



2  
apprenticeships  
every 12 months



**For more information**

[www.kkcfke.org](http://www.kkcfke.org)

**Contact details:**

KKCF Office Location: 1st floor, KCB building, Kakuma Town.

Mobile Number: +254 794626467

IMPLEMENTED JOINTLY BY



IN PARTNERSHIP WITH



SUPPORTED BY

